

Advancing the High-Grade Great Burnt Copper-Gold Project in Central Newfoundland

Corporate Presentation - Jan 2025



Forward-Looking Statements

During the course of this presentation, Benton Resources Inc. may make forward-looking statements with regards to the company's projects and or business plans. Statements may also be made with regards to the company's business strategy, products, partners, and market position which could be construed as forward-looking. Forward-looking statements are subject to risk and uncertainties that could cause results to be materially different than expectations.

The presentation has been prepared by management of Benton Resources and does not represent a recommendation to buy or sell these securities. Investors should always consult their Investment Advisors prior to making any Investment Decision.

Intersection widths are core widths, unless otherwise stated.

Enormous potential with over 25km of underexplored Mineral Belt

- T High Grade Copper-Gold zones over 15km with world class drill results in 2023 - 2024
- T Experienced Team with award winning track record for new discoveries
- T Well funded with over \$4.5m cash and equities in the bank
- T Huge geological system with over 25 km of potential strike in a world class mining jurisdiction (Newfoundland, Canada)
- T Excellent infrastructure, with all weather road and within 2.5km of the Great Burnt Hydro Dam
- T Aggressive exploration ongoing since acquiring in property in October of 2023
 - T Over 18000m completed to date (17 months)
 - T The Great Burnt Copper Deposit has been extended by drilling to 850m from the previous 600m strike length with excellent results
 - T Many wide intersections of >1.0g/t gold at South Pond
 - T South Pond horizon chased for minimum 3.0 km
 - T Many New zones currently being evaluated for advancement

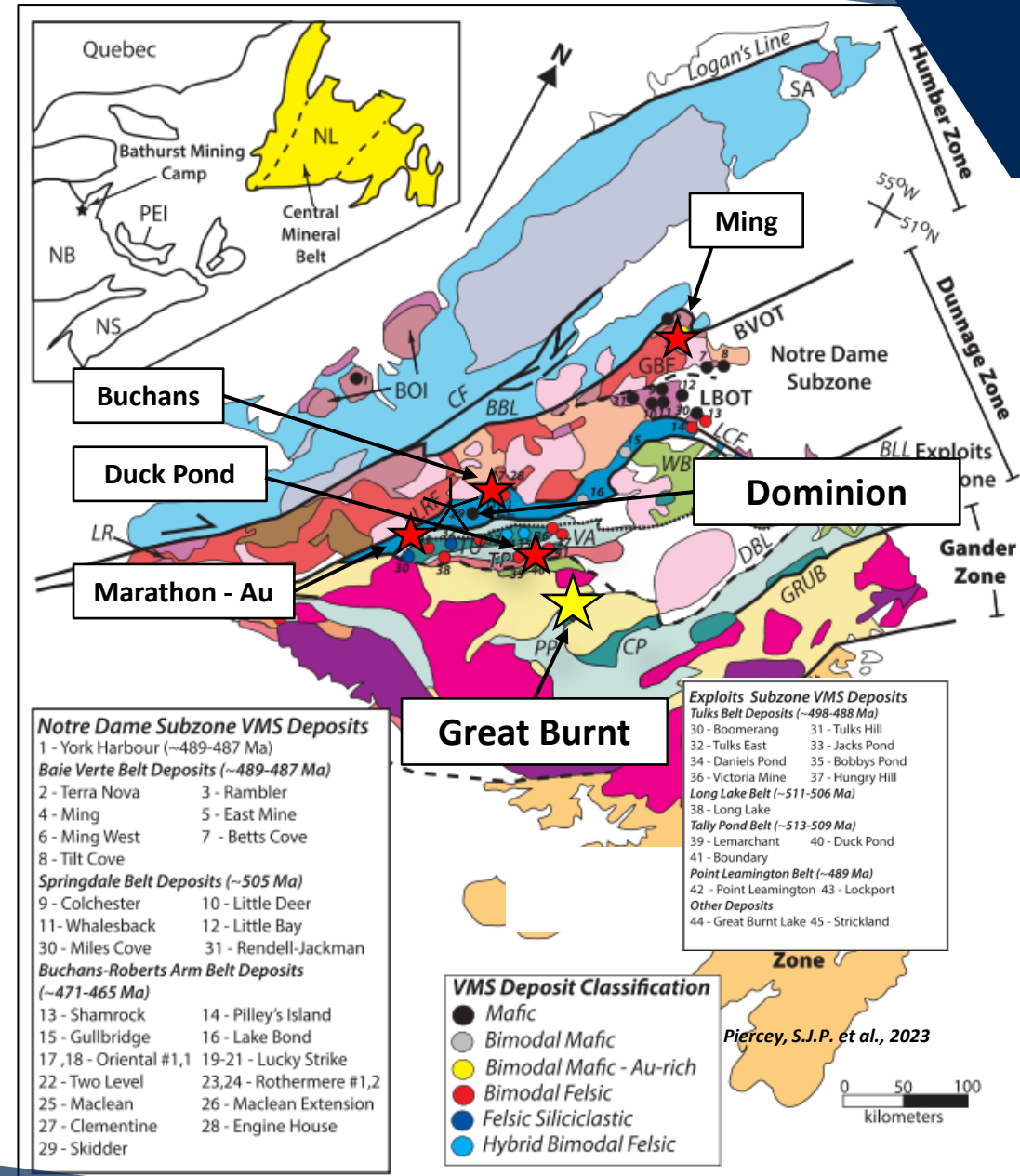
Location of Great Burnt relative to other Newfoundland VMS Deposits

- T Newfoundland is host to multiple High Grade VMS deposits of various classifications
- T Significant past producers include the Buchans, Tilt Cove, Duck Pond and Ming (Rambler) mine. The Ming Deposit is subject to active exploration and resource expansion programs and the Lundberg Zone at Buchans has a significant new resource defined.
- T Additional deposits include Little Deer, Tulks Hill, Bobby's Pond, Daniel's Pond, Domino/Boomerang, Long Lake, Point Leamington.

Significant Past Producers and Resource Estimates

Deposit	M Tonnes	Cu %	Zn %	Pb %	Au g/t	Ag g/t
*Buchans	16.2	1.33	14.51	7.56	1.37	1.26
Lundberg	16.79	0.4	1.5	0.6	0.07	5.7
*Ming	6.7	2.0	-	-	-	-
Ming	30.2	1.81	-	-	0.4	2.7
*Duck Pond	4.1	3.3	5.7	0.9	0.9	59

*Denotes Historic Past Production (Various Public Sources)



Great Burnt Property Attributes and New Targets

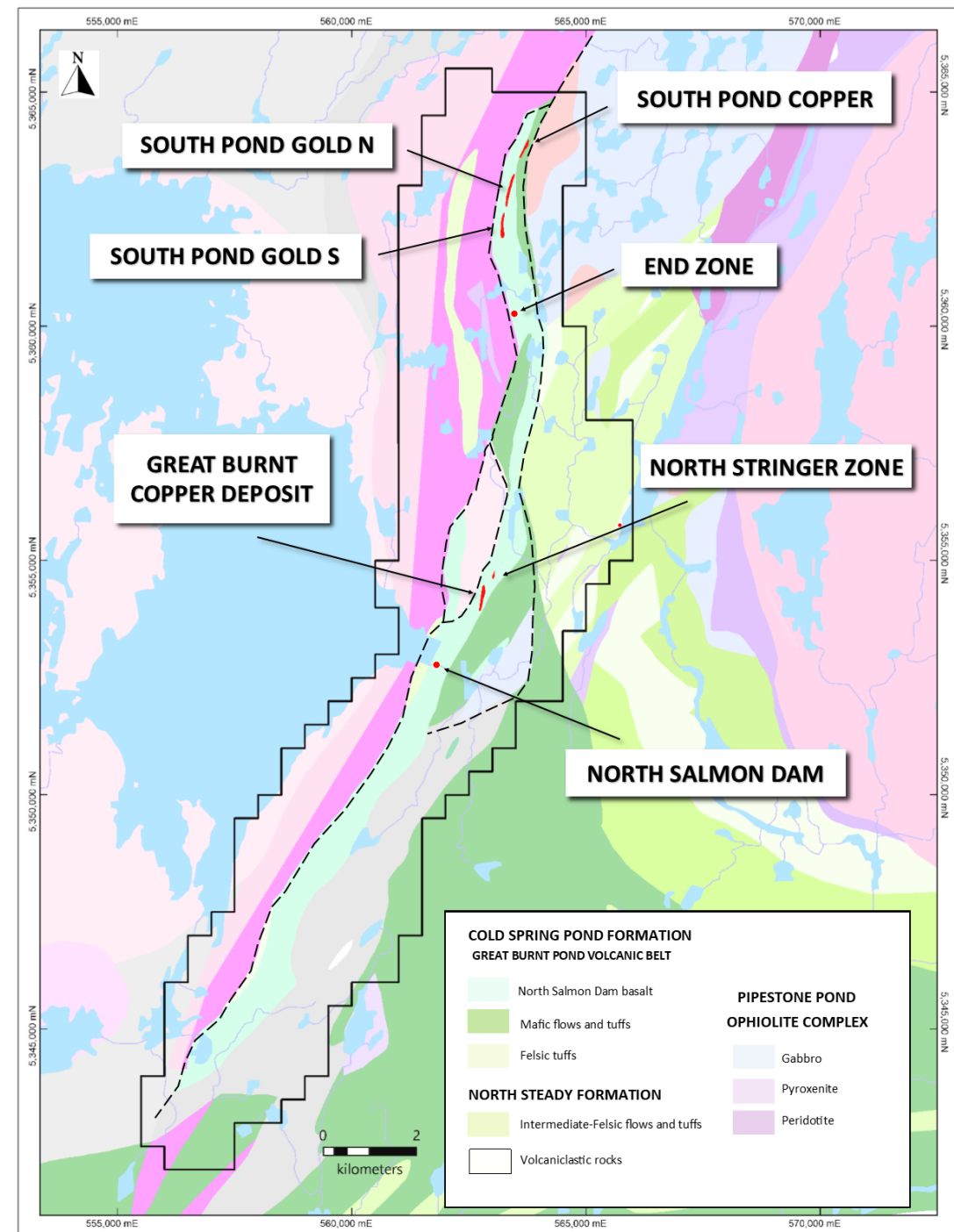
NI 43-101 Compliant Resource Estimates

Area	Class	Tonnes	Cu (%)	Cu (Mlb)
Great Burnt	Indicated	667,000	3.21	53.2
	Inferred	482,000	2.35	28.4

Area	Class	Tonnes	Cu (%)	Cu (Mlb)	Au (g/t)	Au (koz)	CuEq* (%)	CuEq (Mlb)
South Pond	Indicated	214,000	1.26	6.0	1.21	8.3	2.10	9.9
	Inferred	145,000	1.07	3.4	1.02	4.8	1.78	5.7

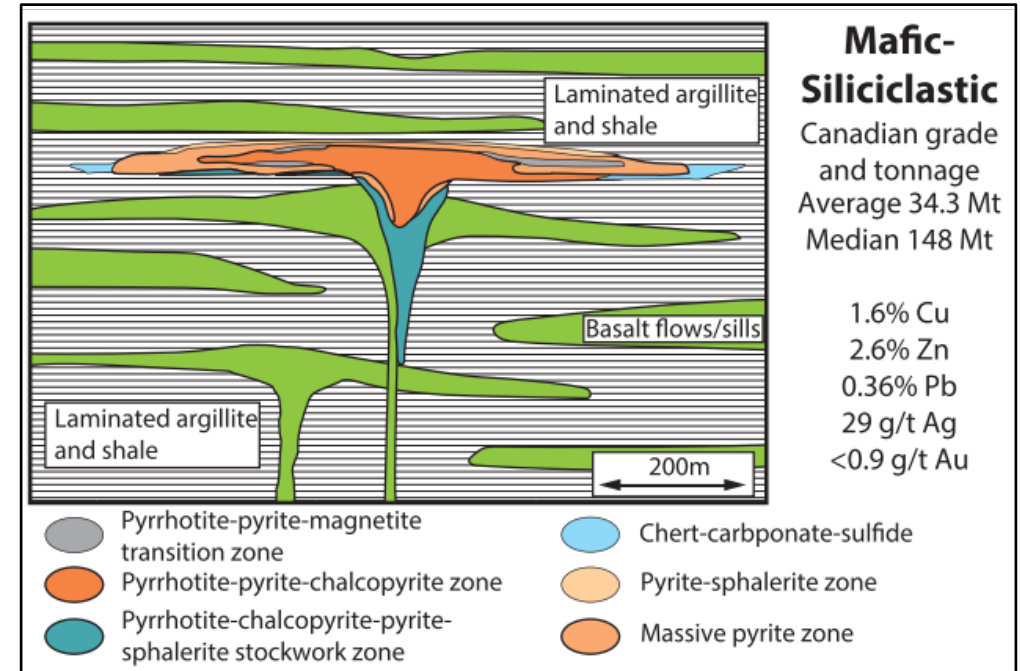
*CuEq%=Cu% + (Au g/t x 0.687). 0.9% Cu% cutoff. P&E Mining Consultants 2022

- T Some of the best results have been drilled from 2016 – 2024
- T 6 known historical zones over 15 km with Significant Copper, Gold, Silver, Zinc and Cobalt values. All zones are open for expansion.
- T Extensive number of untested conductors and untested Copper–Gold soil anomalies identified
- T Prospecting and compilation are ongoing

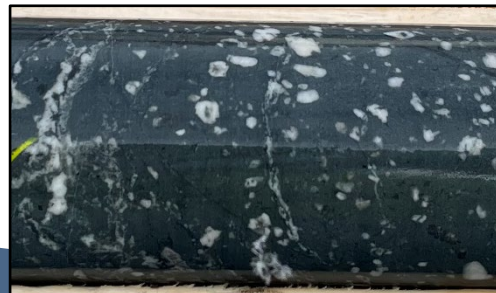
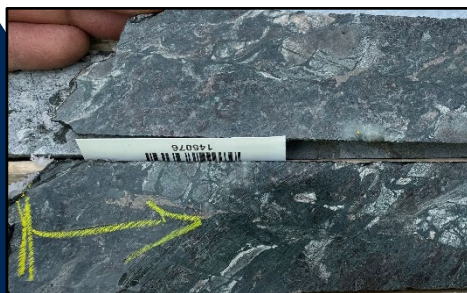


Great Burnt Property Deposit Model

- T Great Burnt Copper Deposit is a Mafic-Siliciclastic or Besshi-Type VMS deposit type
- T Hosted in belts containing mafic volcanic rocks, volcanoclastic and intrusive rocks and abundant sedimentary rocks
- T Typically associated with back-arc (and forearc) environments and are Cu-Zn rich
- T The Canadian average tonnage is 34.3 Mt
- T Joint research program underway between Benton and Memorial University of Newfoundland and Labrador (MUN) to establish the property stratigraphy and lithogeochemical characteristics of host rocks at Great Burnt as an exploration tool. Ore mineralogical study to evaluate mineralization including gold and cobalt enrichment.



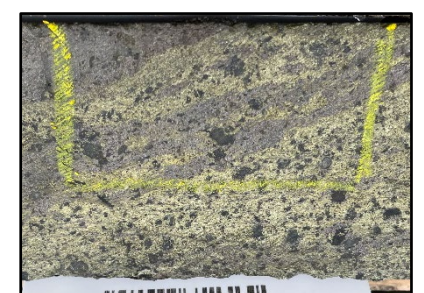
Mafic Volcanics



Argillite



Copper-Rich Massive Sulphides



Formation of VMS and Gold system modified by folding and metamorphism

- T Detail mapping of outcrop and trench exposures confirmed tight and larger scale folding of the high-grade zones.
- T Relogging of various drill holes at South Pond also confirm this theory
- T Ore zone closely associated with highly magnetic massive sulphide (Pyrrhotite/Chalcopyrite)
- T Targeting using detail mag at the peak magnetic high has proven effective for targeting

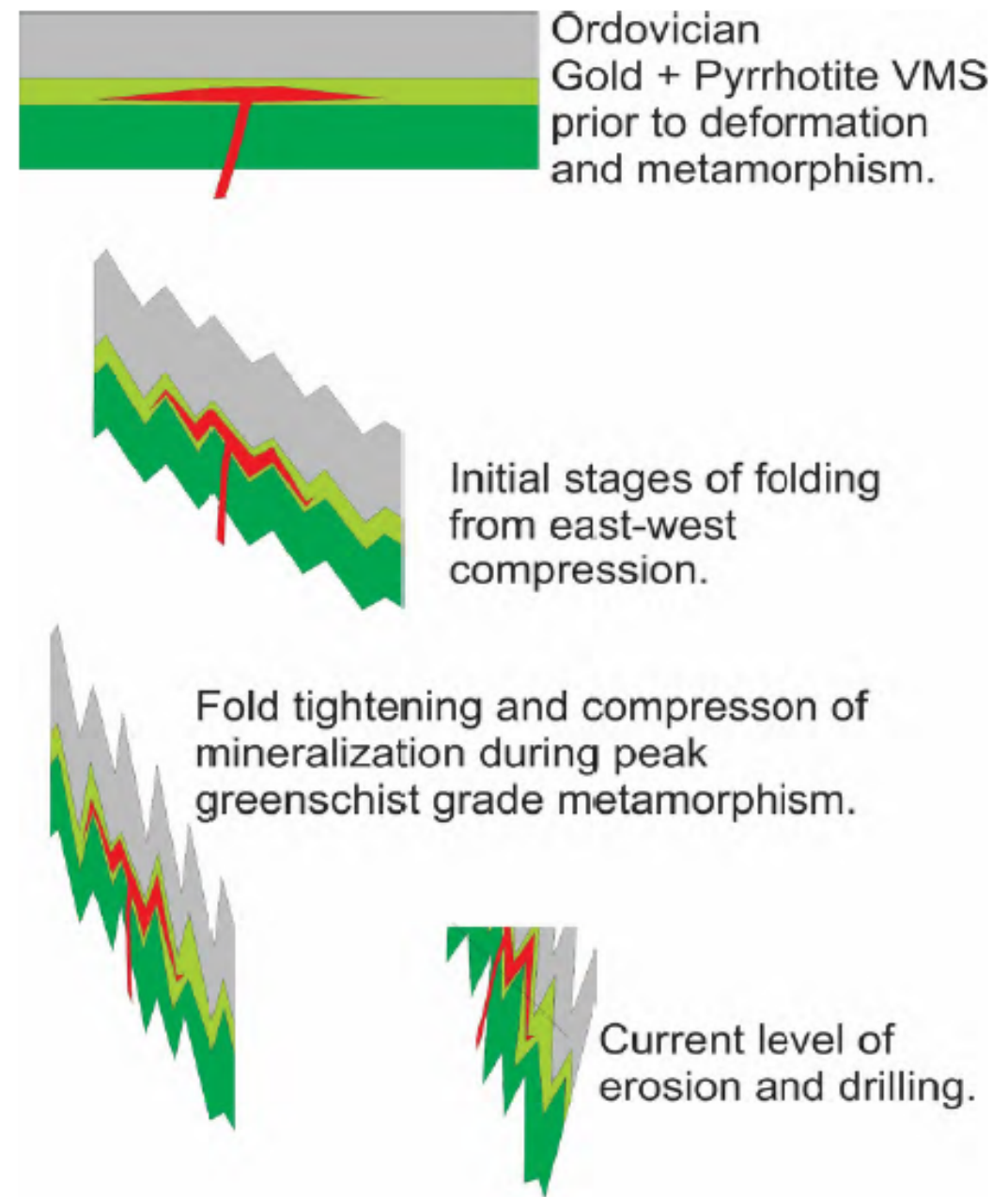
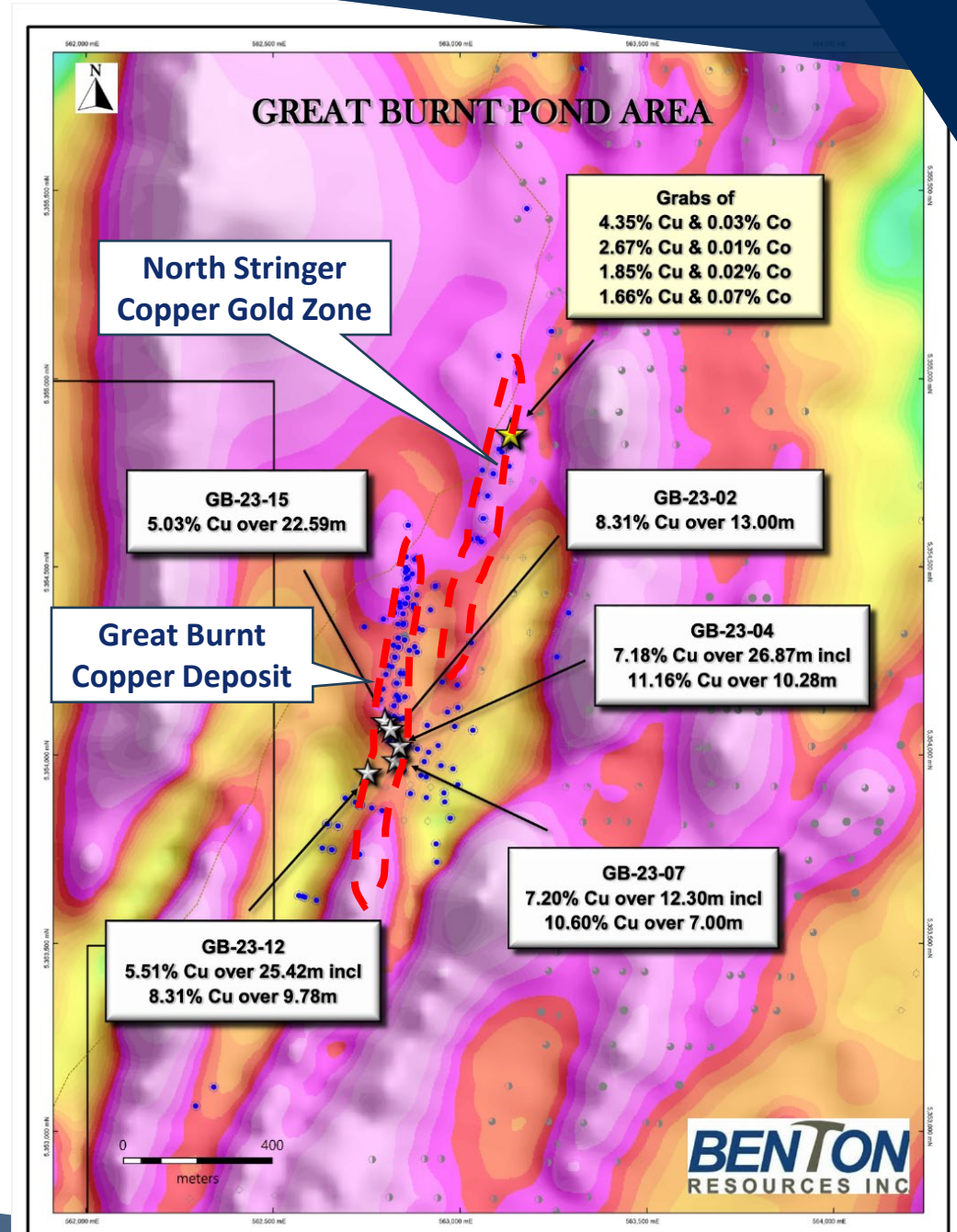


Figure 11. Schematic diagram showing the effect that extremely tight folding has had on mineralization at Great Burnt. Although tight folds have affected the local geological contacts, making them appear to dip steeply west, the overall dip of the stratigraphy and mineralization may actually dip eastward.

Great Burnt Copper Deposit Area: Magnetics, EM Conductors and Drill Holes

- T Great Burnt Deposit extended from previous 650m strike to 850m strike and open for expansion
- T Extensive number of untested conductors
- T 12,000 m in three phases of drilling program extremely successful
- T Some of the best drill intercepts were drilled from 2016-2024 indicating that historic results may be undervaluing the deposit
- T Compilation of historical and new data is ongoing along with trenching, mapping, prospecting and soil geochem surveys
- T Poorly tested North Stringer zone needs further drilling



Great Burnt Copper Selected Drilling Highlights



Previous drilling by Spruce Ridge

- T GB20-05: 27.20m of 8.06% Cu, incl 7.75m of 16.88% Cu
- T GB20-20: 22.75m of 6.89% Cu, incl 12.55m of 10.59% Cu
- T GB18-05: 20.94m of 6.21% Cu, incl 6.98m of 10.71% Cu
- T GB18-06: 9.97m of 7.45% Cu, incl 5.03m of 11.42% Cu
- T GB16-08: 7.50m of 9.45% Cu, incl 3.00m of 19.30% Cu
- T GB16-09: 5.75m of 6.68% Cu, incl 1.50m of 11.70% Cu

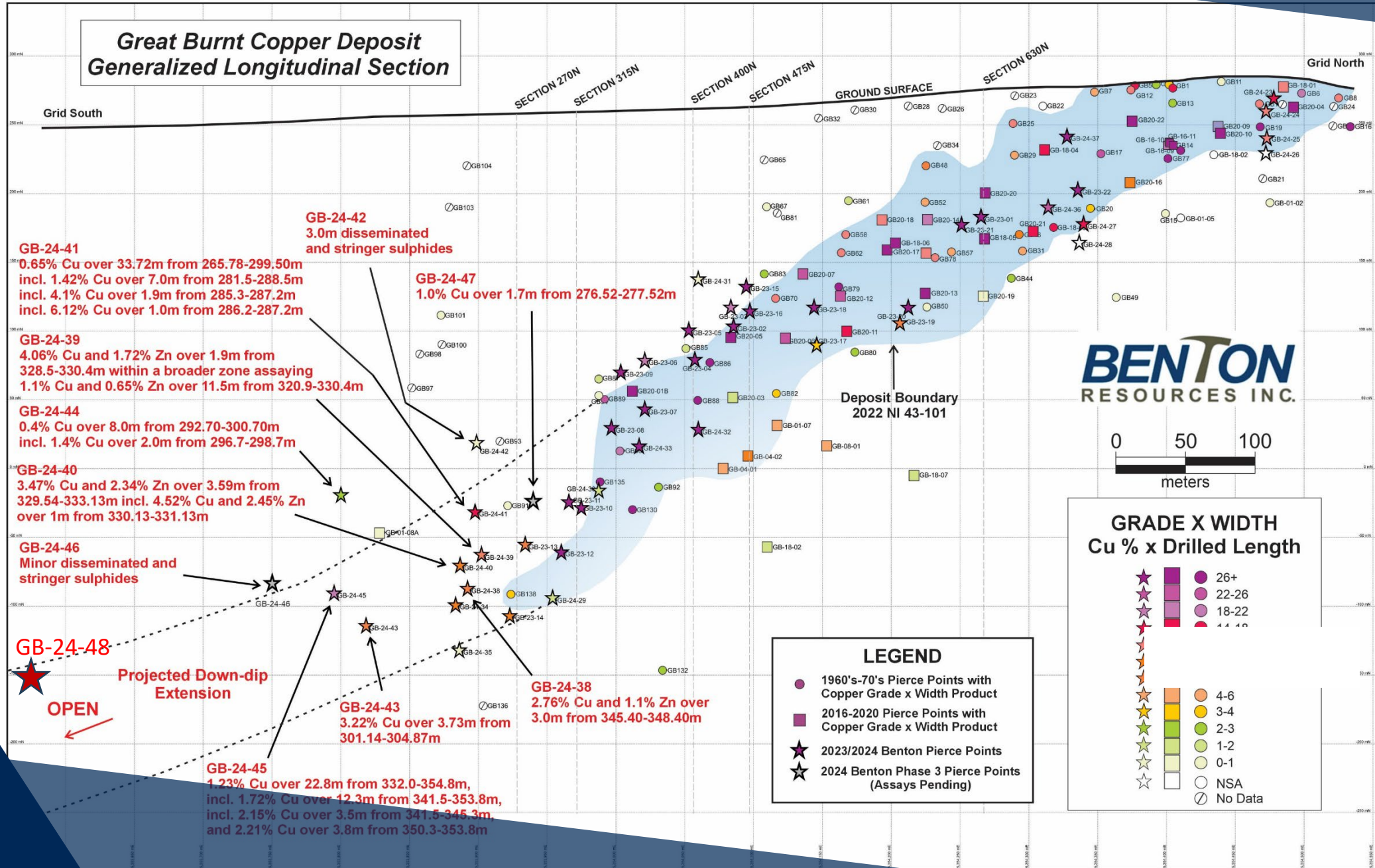
Benton drilling in 2023-2024

- T GB-23-02: 13.00 m of 8.31% Cu, incl 3.00 m of 12.80% Cu
- T GB-23-04: 26.87 m of 7.18% Cu, incl 11.16 m of 10.28% Cu
- T GB-23-07: 12.30 m of 7.20% Cu, incl 7.00 m 10.60% Cu
- T GB-23-12: 25.42 m of 5.51% Cu, incl 1.00 m of 8.77% Cu, 82.00g/t Ag, 4.43g/t Au
- T GB-23-15: 22.59 m of 5.03% Cu, incl 0.50 m of 20.00% Cu
- T GB-23-16: 13.67 m of 5.80% Cu, incl 1.00 m of 20.60% Cu
- T GB-23-18: 8.17 m of 4.22% Cu, incl 7.05 m of 4.11% Cu
- T GB-23-21: 24.00 m of 5.81% Cu, incl 7.00 m of 11.47% Cu
- T GB-23-22: 21.68 m of 3.59% Cu, incl 2.00 m of 15.3% Cu
- T GB-24-23: 7.00 m of 2.02% Cu, incl 4.00 m of 3.01% Cu
- T GB-24-32: 11.29 m of 3.10% Cu, incl 6.63 m of 5.57% Cu
- T GB-24-33: 20.92 m of 2.26% Cu, incl 2.98 m of 4.17% Cu
- T GB-24-37: 18.10 m of 1.99% Cu, incl 4.50 m of 7.24% Cu



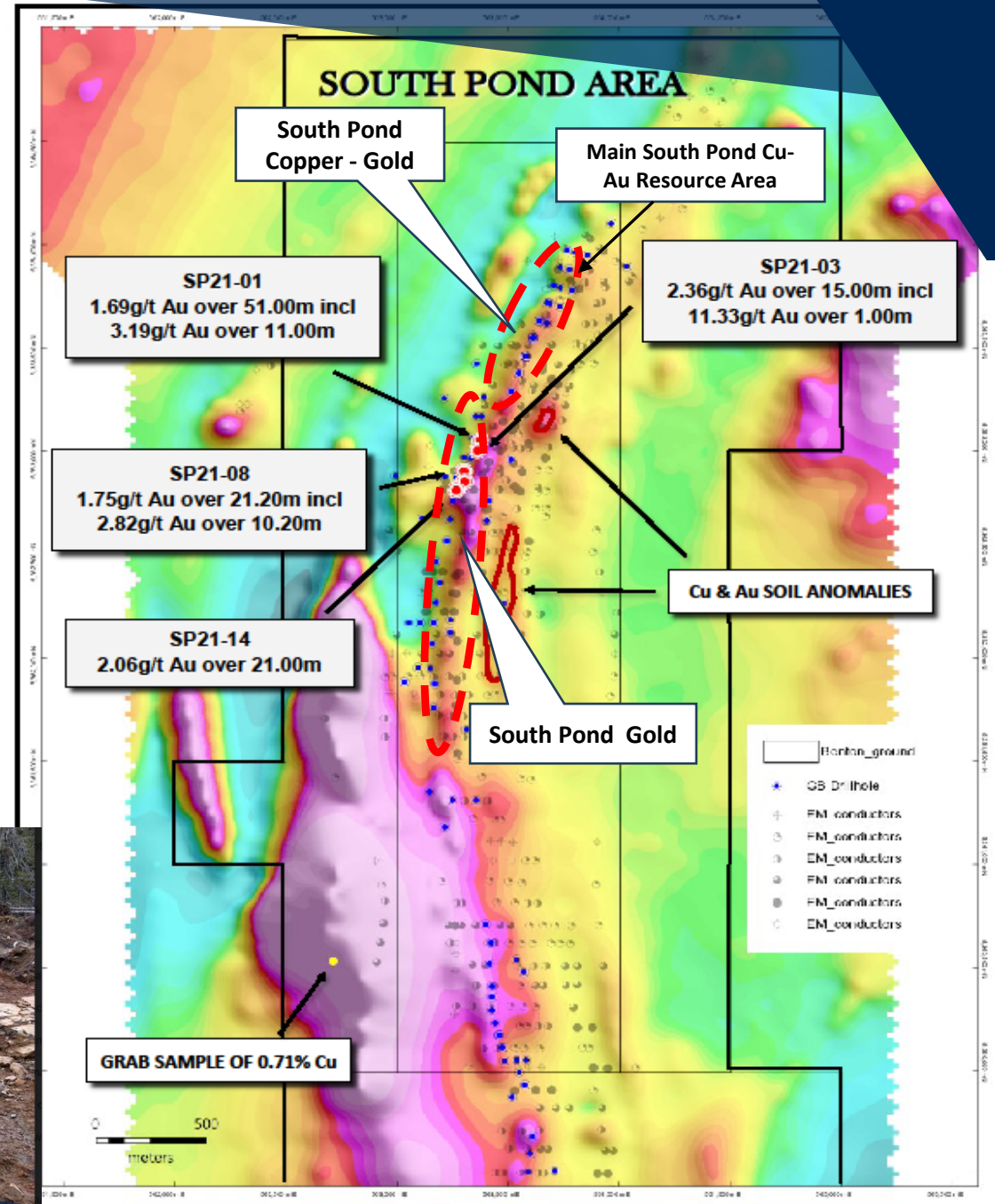
Note: Widths quoted are true core length, true widths are estimated at approximately 70% of core lengths

Great Burnt Long Section - Benton Drilling ☆



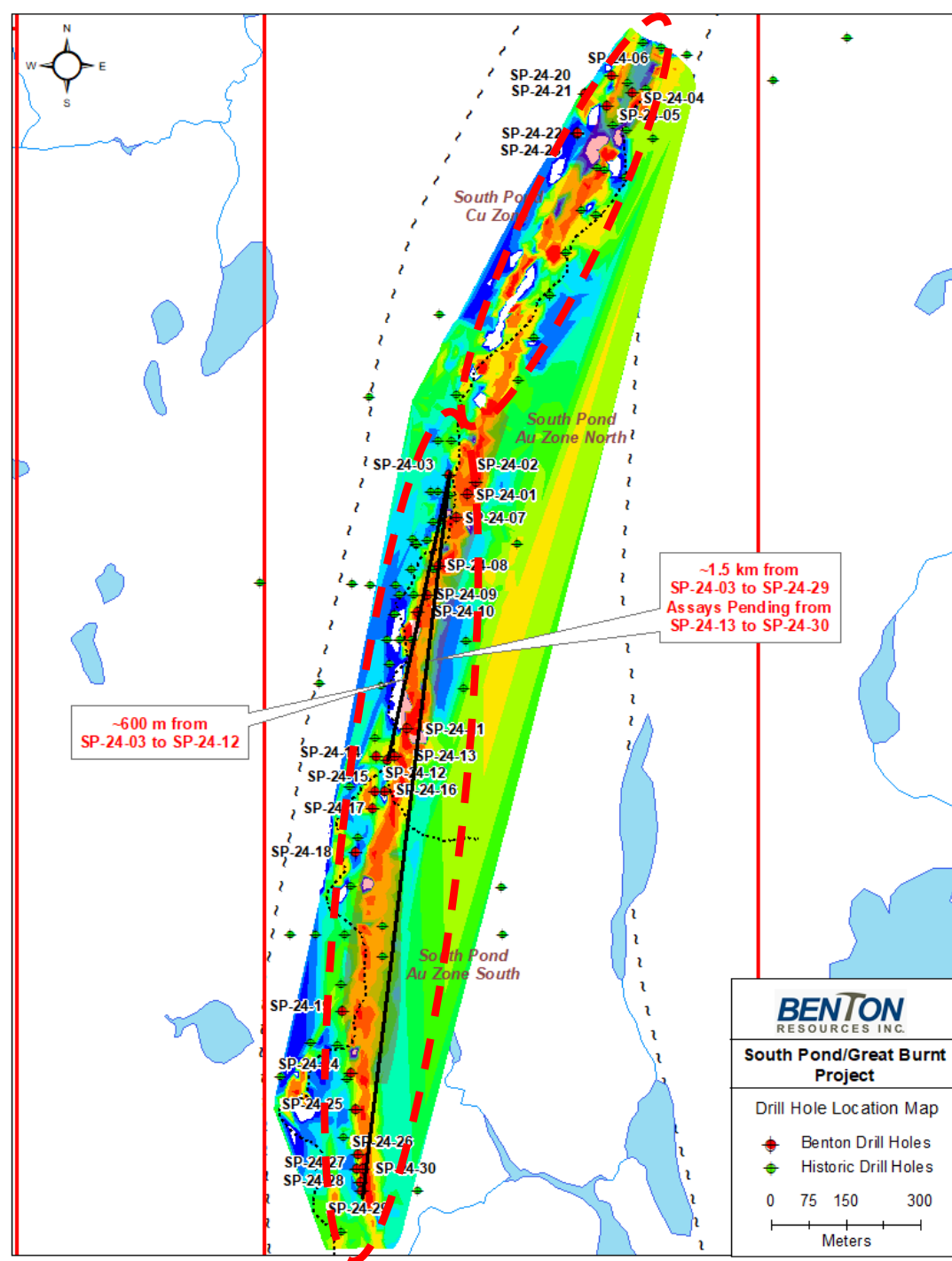
South Pond Copper-Gold Area: Magnetics, EM Conductors and Drill Holes

- T Main South Pond Copper-Gold Deposits untested since the 1970s with 7 new confirming excellent Gold-Copper Values
- T Recent trenching exposed high-grade Copper and Gold: up to 5.67% Cu and 5.03 g/t Gold
- T Extensive number of untested conductors and Cu-Au soil anomalies
- T Zone possibly connects over 3km and remains open



Enormous potential at South Pond Copper and South Pond Gold Zones

- T Over 3km of Strike and still open with possibility of parallel zones
- T Historical holes sometimes drilled over or under the zone due to the folding
- T Detail mapping of outcrop and trench exposures confirmed tight and larger scale folding of the high-grade zones.
- T Relogging of various drill holes at South Pond also confirm this theory
- T Ore zone closely associated with highly magnetic massive sulphide (Pyrrhotite/Chalcopyrite)
- T Targeting using detail mag at the peak magnetic high has proven effective for targeting



South Pond Gold Zone Selected Drilling Highlights

Previous drilling by Spruce Ridge

- T SP21-01: 51.00 m of 1.69g/t Au, incl, 11.00 m of 3.19g/t Au
- T SP21-03: 15.00 m of 2.36g/t Au, incl, 1.00 m of 11.33g/t Au
- T SP21-08: 21.20 m of 1.75g/t Au, incl, 10.20 m of 2.82g/t Au
- T SP21-11: 17.60 m of 1.34g/t Au, incl, 4.20 m of 2.48g/t Au
- T SP21-14: 21.00 m of 2.06g/t Au

Benton drilling in 2024

- T SP-24-01: 18.80 m of 1.13g/t, and 5.96m of 2.06g/t Au
- T SP-24-03: 43.75 m of 1.62g/t Au, incl 4.00 m of 3.99g/t Au
- T SP-24-07: 74.20 m of 1.43g/t Au, incl 8.00 m of 2.94g/t Au
- T SP-24-08: 14.00 m of 1.23g/t Au incl, 4.00 m of 2.33g/t Au
- T SP-24-09: 24.00 m of 1.48g/t Au, incl 7.00 m of 2.03g/t Au
- T SP-24-10: 20.00 m of 1.04g/t Au, and 25.00 m of 1.54g/t Au
- T SP-24-12: 27.07 m of 1.08g/t Au, incl 5.00 m of 2.11g/t Au
- T SP-24-13: 19.75 m of 1.42g/t Au, incl 4.00 m of 3.08g/t Au
- T SP-24-15: 22.50 m of 1.24g/t Au, incl 4.00 m 2.08g/t Au
- T SP-24-23: 6.75 m of 2.90g/t Au
- T SP-24-28: 27.40 m of 1.00g/t Au, incl 3.00 m of 2.92g/t Au
- T SP-24-29: 25.70 m of 0.64g/t Au over, incl 3.00 m of 1.47g/t Au
- T SP-24-30: 8.00 m of 2.07g/t Au, incl 2.0 m of 4.83g/t Au

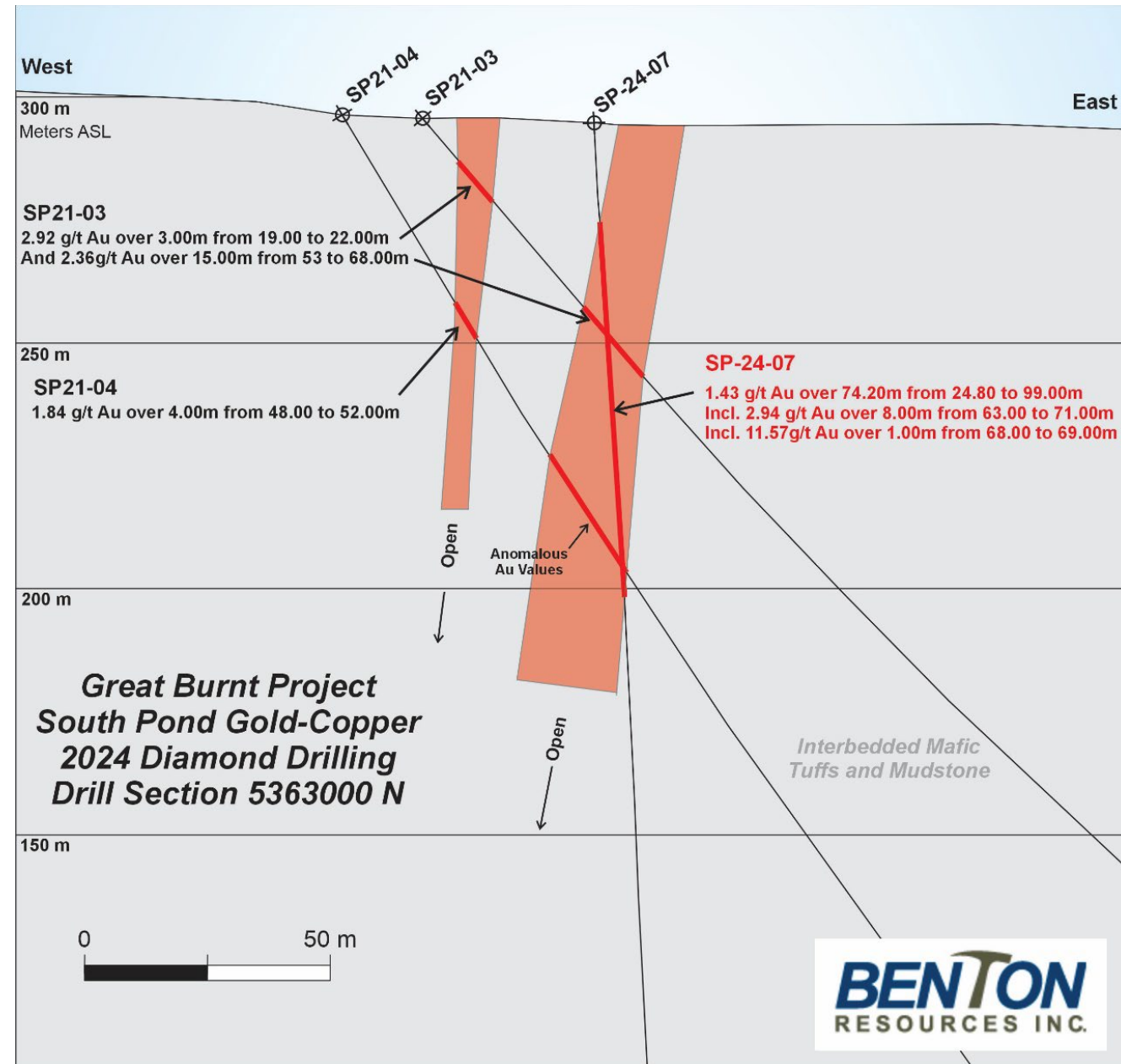
Note: Widths quoted are core length, true widths are estimated at approximately 70% of core lengths



South Pond Gold Zone Drill Section

- T Historical holes sometimes drilled over or under the zone due to the folding
- T Detail mapping of outcrop and trench exposures confirmed tight and larger scale folding of the high-grade zones.
- T Relogging of various drill holes at South Pond also confirm this theory
- T Ore zone closely associated with highly magnetic massive sulphide (Pyrrhotite/Chalcopyrite)
- T Targeting using detail mag at the peak magnetic high has proven effective for targeting

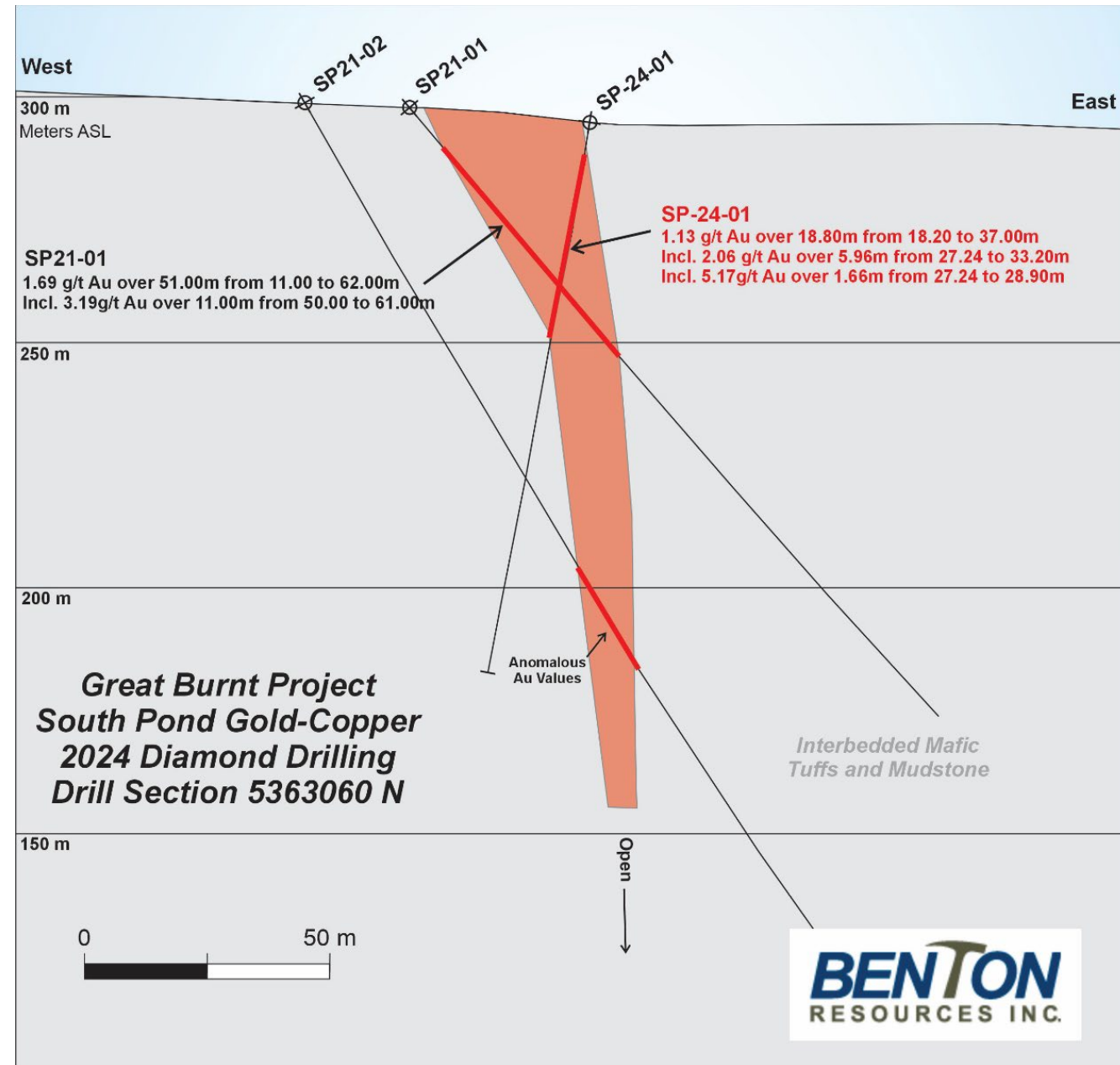
Figure 1: South Pond Section 5363000N



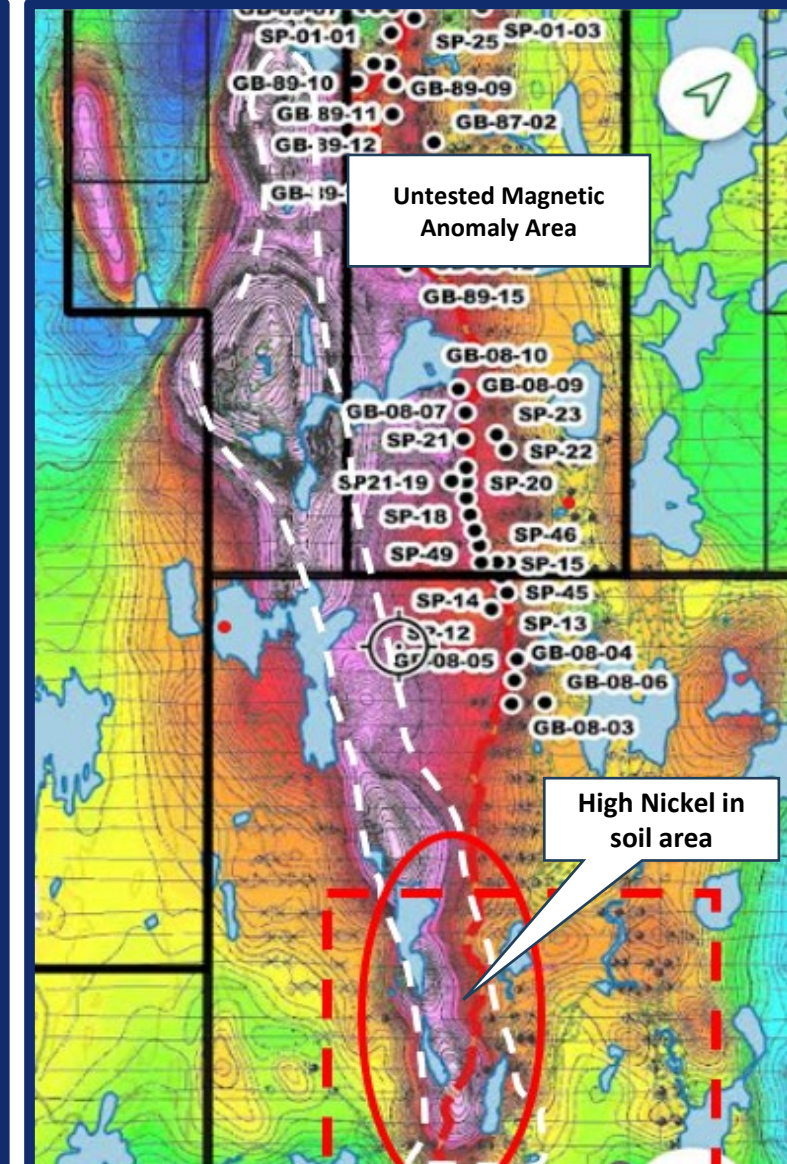
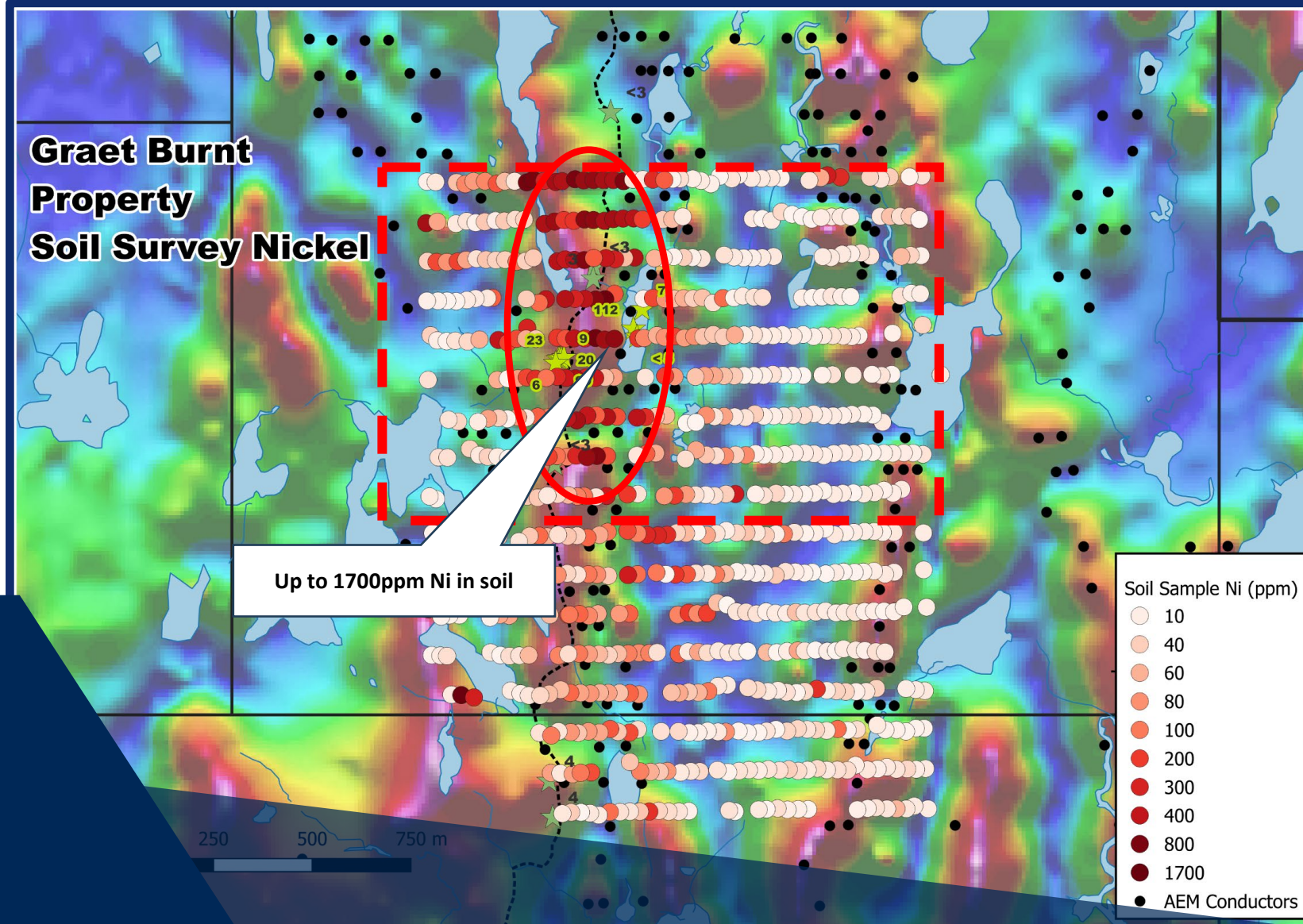
South Pond Gold Zone Drill Section

- T Historical holes sometimes drilled over or under the zone due to the folding
- T Detail mapping of outcrop and trench exposures confirmed tight and larger scale folding of the high-grade zones.
- T Relogging of various drill holes at South Pond also confirm this theory
- T Ore zone closely associated with highly magnetic massive sulphide (Pyrrhotite/Chalcopyrite)
- T Targeting using detail mag at the peak magnetic high has proven effective for targeting

Figure 2: South Pond Section 5363060N

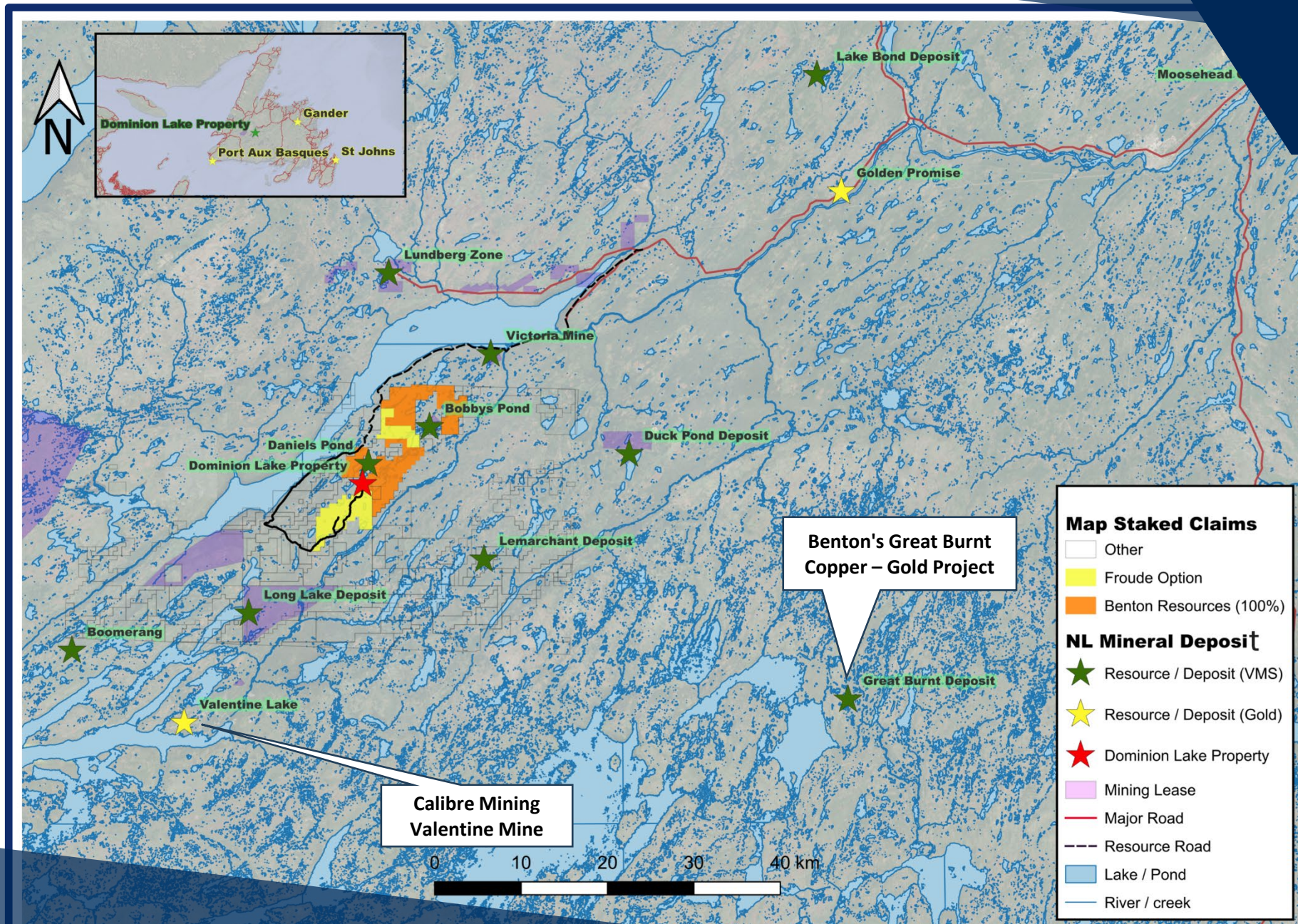


Large Nickel soil anomaly associated with large Magnetic anomaly show the potential for high grade massive sulphide and lower grade awaruite such a First Atlantic Nickel to the East



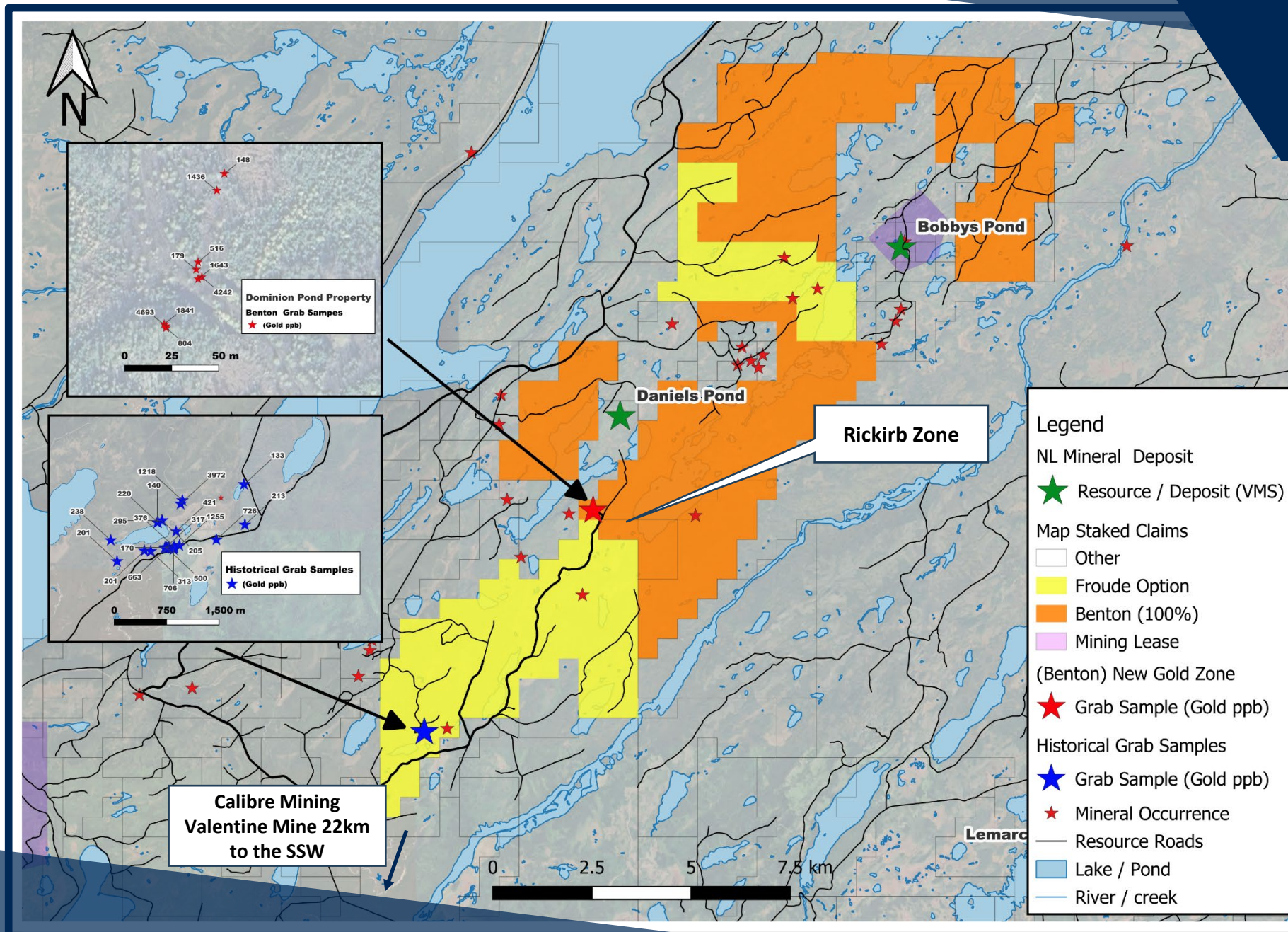
Dominion VMS Gold Project

- T Acquired by staking and small option deal from local prospector
- T Recent discovery of new gold zone grading up to 4.7gpt gold
- T Project surrounds two known VMS deposits
- T Very little previous exploration for gold
- T Large number of untested boulders carrying highly anomalous gold values



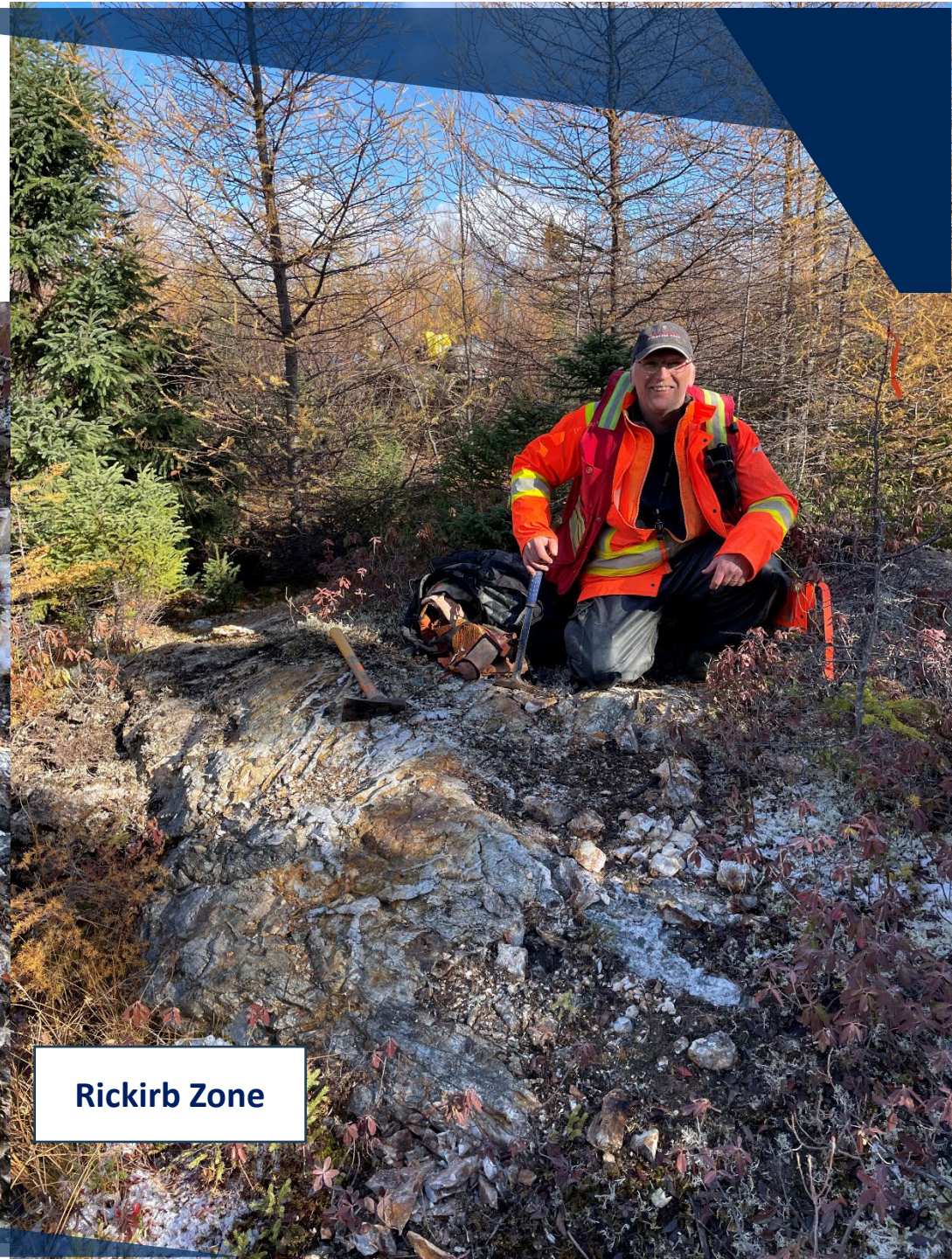
Dominion VMS Gold Project

- T Acquired by staking and small option deal from local prospector
- T Recent discovery of new Rickirb gold zone grading up to 4.7gpt gold
- T Project surrounds two known VMS deposits
- T Very little previous exploration for gold
- T Large number of untested boulders carrying highly anomalous gold values



Dominion VMS Gold Project

Rickirb Gold Zone



Rickirb Zone

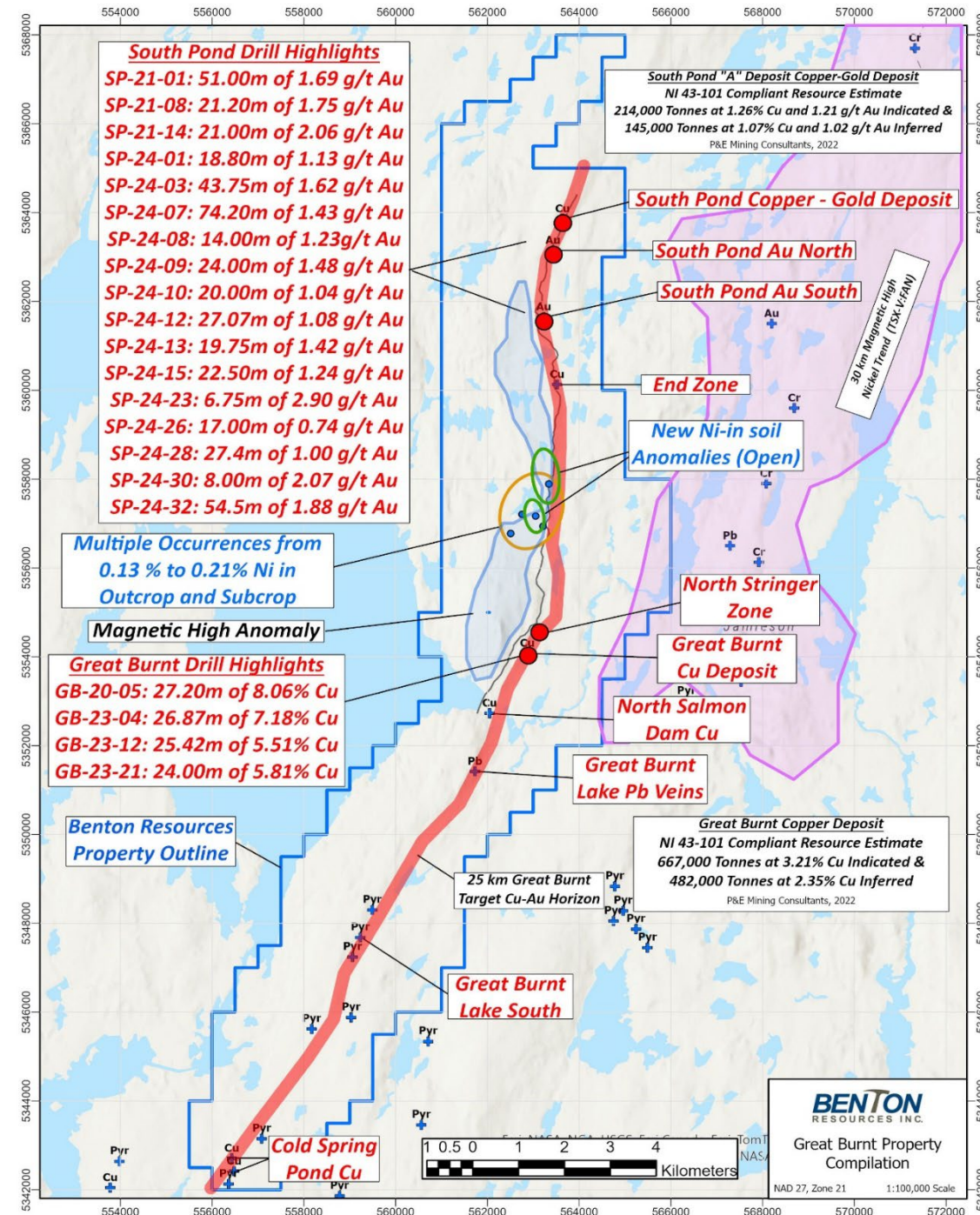
Benton 2024 Highlights and 2025 Plans

Great Burnt Lake Copper-Gold

- T Deep geophysical conductor identified which could substantially expand the Great Burnt Copper deposit to 1.1 km in length
- T Excellent shallow intercepts of gold at South Pond Area over **1.7km** with many results outstanding for Gold which could extend the zone to **2.3km** in length, zone is open north and south
- T Copper grades up to **3.48%** with **2.21g/t** gold over 0.9m at South Pond Main Zone along with high grade zones of 3.0m grading **6.42g/t** Au including 1.0m of **15.72g/t** with base metals pending
- T New targets of Copper, Gold, Zinc continuing to be identified for exploration follow up
- T Large Nickel target outline associated with Magnetic anomaly, untested EM conductors, large soil anomaly, up to 0.23% Ni in grab samples
- T Drilling has recommenced with a further 15000m drill program planned for remaining 2024-2025

Vinland Lithium Spin-Out and Clean Air Metals

- T **Vinland Lithium**, spin-out approved by TSX.V and should be completed in January 2025
- T Seed financing of \$2.0m(CAD) at \$1.00 per share completed by Piedmont
- T Benton will retain 2.0m shares and also dividend 2.0m shares to Shareholders
- T Benton to retain a 1% NSR on the Killick Lithium project
- T To maintain option, Piedmont must pay Benton \$5.0m and spend \$12.0m to earn 62.5% interest in the project
- T **Clean Air Metals**, Benton holds 24.6m shares or approximately 11.4%
- T Benton Holds a 0.5% NSR on the Escape Lake Deposit and portion of the Thunder Bay North Deposit



Capital Structure (as of September 2024)

Shares Issued	205.51 million
Warrants (\$0.11-0.25)	26.77 million
Options (\$0.07-0.20)	12.35 million
Fully Diluted	244.63 million
Market Cap	\$15.5 million

Cash Position = \$3.0 million
Equity Holdings = >\$1.84 million



BENTON

RESOURCES INC.

Stephen Stares
President & CEO

sstares@bentonresources.ca

Nicholas Konkin
Investor Relations
nick@grovecorp.ca

Website:
www.bentonresources.ca

